

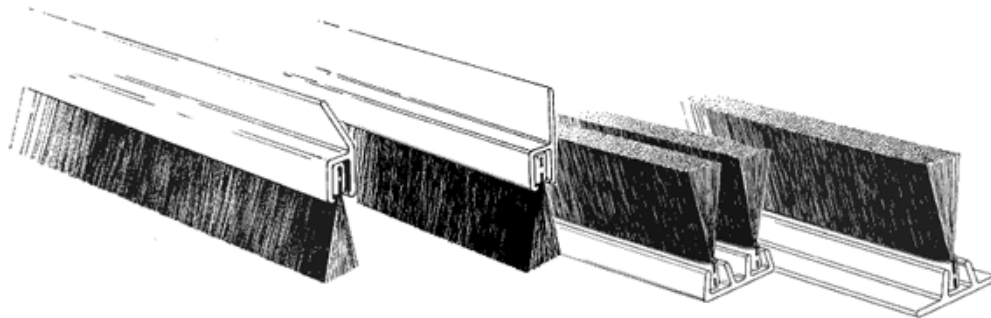
If the brush application or delivery is critical...  
Power Brushes is the company to call: 800.968.9600

Products ▾ Materials ▾ Services ▾ Glossary PDF Archive Site Map Contact Us Home

**Holders for Strip Brushes**

Aluminum holders designed to fit #2.5, #3, #4, or #7 metal backings. They are available in a variety of lengths and with different profiles and flanges.

Choose your holder by Style (below) – or – [by Size](#).



If the brush application or delivery is critical...  
Power Brushes is the company to call!

(800) 968-9600

For design assistance call us!

(800) 968-9600.

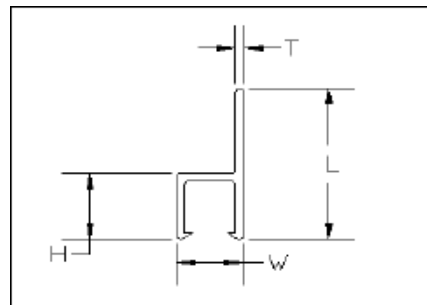
Click for more information on (in order): [EF4181/EF7118](#), [EH4181/EH7134](#), [EW7119](#), [EU7125](#).

**Holders for Strip Brushes by Style, ([also available by Size](#))**

Aluminum holders designed to fit #3, #4 or #7 metal backings. They are available in a variety of lengths and with different profiles and flanges.

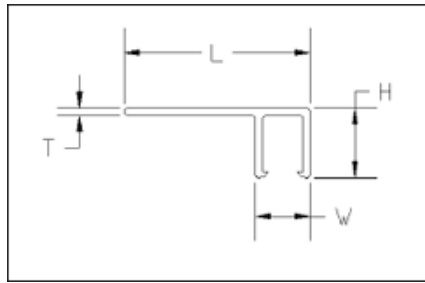
**STRAIGHT FLANGE**

Part #	Backing	H	W	L	T
EH2066	2.5	0.23	0.23	0.66	0.045
EH2087	2.5	0.23	0.23	0.87	0.045
EH3075	3	0.26	0.26	0.75	0.045
EH3100	3	0.26	0.26	1.00	0.060
EH3138	3	0.26	0.26	1.38	0.050
EH4088	4	0.32	0.32	0.88	0.050
EH4124	4	0.32	0.32	1.24	0.052
EH4210	4	0.32	0.32	2.10	0.050
EH7195	7	0.52	0.44	1.95	0.055
EH7134	7	0.59	0.47	1.34	0.060
EH7200	7	0.59	0.48	2.00	0.060
EH7550	7	0.61	0.50	5.50	0.070
EH4123	4	0.34	0.31	1.23	0.050



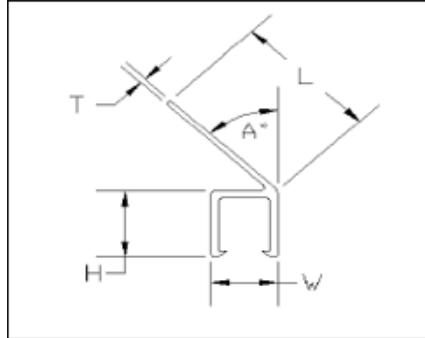
**RIGHT ANGLE FLANGE**

Part #	Backing	H	W	L	T
EL2065	2.5	0.23	0.23	0.65	0.045
EL3125	3	0.26	0.26	1.25	0.050
EL4088	4	0.31	0.30	0.88	0.050
EL7138	7	0.50	0.44	1.38	0.055
EL7183	7	0.59	0.47	1.83	0.055



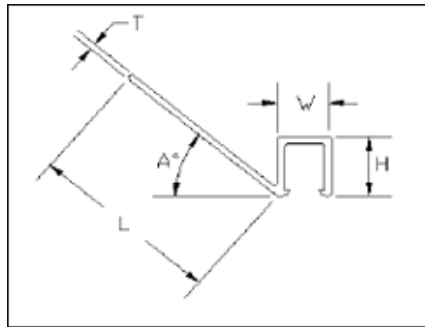
**ANGLE FLANGE**

Part #	Backing	H	W	L	T	A
EF2075	2.5	0.23	0.23	0.75	0.045	30°
EF2050	2.5	0.23	0.24	0.50	0.045	40°
EF3118	3	0.26	0.26	1.18	0.062	40°
EF3075	3	0.26	0.26	0.75	0.062	50°
EF4098	4	0.31	0.30	0.98	0.050	35°
EF7143	7	0.52	0.44	1.43	0.055	30°
EF714A	7	0.59	0.47	1.43	0.055	30°
EF7136	7	0.59	0.47	1.36	0.055	45°
EF4181	4	0.34	0.31	1.81	0.050	45°
EF7118	7	0.59	0.47	1.18	0.060	45°

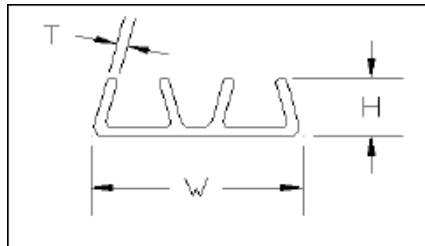


**REVERSE ANGLE FLANGE**

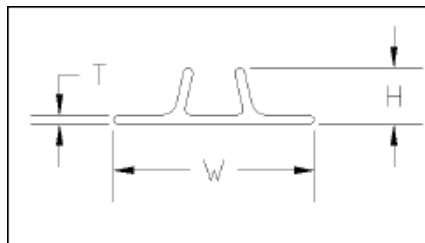
Part #	Backing	H	W	L	T	A
ER2069	2.5	0.24	0.24	0.69	0.050	45°
ER4100	4	0.32	0.31	1.00	0.050	22°
ER4088	4	0.32	0.31	0.88	0.050	40°
ER7160	7	0.52	0.44	1.60	0.055	40°
ER7164	7	0.59	0.47	1.64	0.062	45°
ER4093	4	0.31	0.32	0.93	0.050	50°



Part #	Backing	H	W	L	T	A
EW7119	7	0.39	1.19	NA	0.060	NA



Part #	Backing	H	W	L	T	A
EU7125	7	0.34	1.25	NA	0.060	NA



[Our History](#) [Charity](#) [Photo Album](#) [Terms & Conditions](#)

756 South Byrne Rd., Toledo, OH 43609 • (419) 385-5727 • (419) 382-0756 fax • sales@powerbrushes.com